



BARK!

a celebration of trees & woods
13-25 April 2009

Shaftesbury Tree Group & Shaftesbury Arts Centre
www.barkfestival.co.uk

BARK! Programme of Events

Date	Times	Event		Venue
9 Feb (Mon)	7.30	Charlie Waite - photographing trees and landscape	Illustrated talk	SAC
12 Apr (Sun)	11.00	Dominic Gane (NDDC Tree Officer) - Shaftesbury's significant trees	Walk	Meet outside Guild Hall
15 Apr (Wed)	7.30	Tim Laycock - Trees in folksong, traditional stories and dialect poetry of Wessex	Concert	SAC
17 Apr (Fri)	8.00	The Tree of the Wooden Clogs (Olmi)	Film	SAC
18 Apr (Sat)	7.30	Jeremy Harte - Tree legends of the west	Talk	SAC
18 Apr (Sat) - 19 Apr (Sun)	10.00 - 4.00 (Sat) 11.00 - 3.00 (Sun)	Projects from Dorset and Wiltshire - woodland, wild life and sustainable use of timber	Displays	Guild Hall
19 Apr (Sun)	7.30	Sue Clifford - Trees, Woods & The Green Man Sean Cooch - Ancient Trees of North Dorset	Illustrated talks	SAC
22 Apr (Wed)	7.30	MAD - The Forest is a Long Time Growing - poetry, prose and music	Concert	SAC
24 Apr (Fri)	8.00	Ivan's Childhood (Tarkovsky) and The Man Who Planted Trees (Back)	Films	SAC
25 Apr (Sat)	7.30	Richard Mabey - Beechcombings - the narratives of trees	Talk	SAC
26 Apr (Sun)	11.00	Robin Walter (Woodland Trust) - Duncliffe Wood	Walk	Meet at Duncliffe
29 Apr (Wed)	7.30	James Crowden - Ciderland	Talk	SAC
13 - 25 Apr	10.00 - 4.30	Charlie Waite's tree and landscape photographs	Exhibition	SAC Phoenix Room
13 - 25 Apr	10.00 - 4.30	Charlie Baird, Joan Haig, Richard Hoare, Isabel Mullery, Peter Ursem - visual arts	Exhibition	SAC The Gallery
13 - 25 Apr	10.00 - 4.30	Shaftesbury Museum and SAC Camera Club - Shaftesbury's Trees in old and new photographs	Exhibition	SAC Upstairs
13 - 25 Apr	10.00 - 4.30	Steve Pocock - wood turnings	Exhibition	SAC Upstairs
13 - 25 Apr	Various	Rachel Sargent (painter) and Catherine Simmonds (poet)	Exhibition	Turnbull's café
13 - 25 Apr	Various	Dave Martin - photographs of trees	Exhibition	The Salt Cellar
13 - 25 Apr	Various	Participatory Poetry Wall	Exhibition	Turnbull's café
13 - 25 Apr	Various	Shaftesbury School Pupils' Art Exhibition	Exhibition	Westminster Memorial Hospital
2 - 3 May		Shaftesbury Food Festival	Various	Around Town

Welcome to **BARK!**

Organised by the **Shaftesbury Tree Group** and **Shaftesbury Arts Centre**, **BARK!** is a celebration of trees and woods close to home and far away. The festival is an affirmation of the importance of trees to our everyday lives and the beauty and joy they bring us.

Trees and woods are enmeshed in our cultural life and have always inspired artists, writers, musicians, photographers. **BARK!** is a reflection of the feelings we have for trees now, at a time when we need them more than ever.

The festival also provides information on the ways in which we can enjoy trees and woods, become involved in their care and make use of the timber grown from local woods that are managed in a sustainable way.

Thanks to the contributors and participating artists, organisations, restaurants and cafes that are hosting exhibitions, our volunteers, and to our funders.

The BARK! team

All events are at the Shaftesbury Arts Centre in Bell Street unless otherwise noted

TICKETS for BARK! are available from:

Shaftesbury Arts Centre:

01747 854321 10.30 - 12.30

Shaftesbury TIC:

01747 853514 10.00 - 3.00

www.goldhilltickets.co.uk



PROGRAMME

Please look out for updates on our website
www.barkfestival.co.uk

Monday 9 February

Charlie Waite

The internationally acclaimed landscape photographer and author **Charlie Waite**, who lives in Dorset, will give an illustrated talk about his approach to taking photographs of landscapes and trees to launch and raise funds for the festival.

7.30

Tickets £10, £7 SAC Members, U18s £4



Sunday 12 April



Shaftesbury's Significant Trees

A walk with **Dominic Gane**,
North Dorset District Council's
Tree Officer.

11.00

*Meet outside Shaftesbury Guild Hall
in the High Street.*

Free event.

Karen Green

Monday 13 April – Sunday 25 April

Fascination with Trees

A visual art exhibition curated by **Peter Ursem**



Peter Ursem

**Charlie Baird Joan Haig
Richard Hoare
Isabel Mullery Peter Ursem**

This exhibition shows work of five Shaftesbury artists of international standing, all of whom have in their work revisited the secret world of trees time and time again to be embraced by our giant overlookers.



Richard Hoare

Charlie Baird's vivid paintings locate dreams in the landscape. His recent series 'Endangered Species' is a powerful cry in a world at risk of losing our natural habitat.

Joan Haig is a see-er who has painted trees all her life, capturing their light and movement in subtle tones.

Light is also a key motif in **Richard Hoare's** paintings and prints. A keen traveller, Richard has observed trees from green England to the far south, in the morning dawn, the scorching sun and the moonlit night.

Isabel Mullery works with paper, collage and embroidery. She has been looking at the shapes of branches and the spaces between them. As an art teacher at Shaftesbury school, she has worked with her pupils towards the **BARK! festival** during the last year.

In many of the woodcuts and paintings of Dutch artist **Peter Ursem** trees take centre stage, as characters in a story. Peter is fascinated by trees as personalities, and by their compositional potential on canvas.

The Gallery: Monday 13 to Saturday 25 April. Open every day 10.00 - 4.30





Charlie Waite

Tree and Landscape Photography by Charlie Waite

An exhibition of the works of one of the world's leading landscape

photographers who has always been inspired and captivated by light.

Phoenix Room: 10.00 - 4.30

Shaftesbury's Trees in old and new photographs

Photos supplied by Shaftesbury Museum taken in the early 1900s by **A. E. Tyler** with **Bill Purnell's** photos of the same locations in the 1980s that include prominent trees re-taken by members of the Shaftesbury Camera Club in 2008.

Upstairs in Shaftesbury Arts Centre.



Woodturning by Steve Pocock

Steve Pocock specialises in bespoke pieces from bowls to chess sets, turned from native hardwoods.

Upstairs in the Shaftesbury Arts Centre.

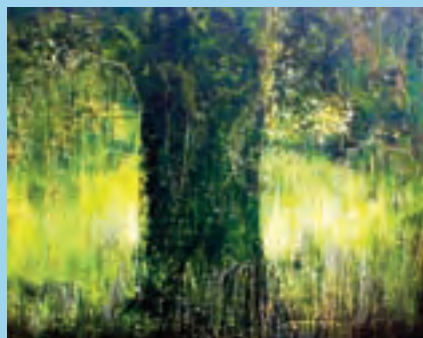


**Turnbull's
Delicatessen & Café**
Rachel Sargent
&
**Catherine
Simmonds**



Rachel Sargent (painter) and **Catherine Simmonds** (poet) team up for **BARK!** to explore the miraculous chemical and visual metamorphosis of light that makes the trees we know and love. Taking the beech tree as their subject, Rachel will work with photopolymer or solar plates, which enable both images and text to be established on a photosensitive surface via exposure of light. Through this process Rachel's paintings and Catherine's poetry can be combined. An exhibition of this work will be on show in the Conservatory between April 13th and 25th.

On Thursday April 16th there is a chance to view the work with cheese, wine and a reading between 6.30 and 7.30pm.



Rachel Sargent

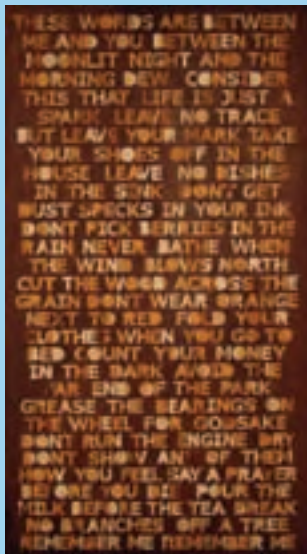
The Salt Cellar
Photographs
of trees
by Dave Martin

Dorset resident **Dave Martin** (aka 'A Man in a Hat') is a professional photographer who takes his inspiration from the beauty and form in nature.

He applies methods and values of traditional photography within the greatly flexible digital format, showing that art and science can be combined to great effect.



Peter Ursem, 'The Yew Speaks'



Turnbulls Delicatessen & Café Participatory Poetry Wall

Write a poem (or short prose) about a tree, woods, forests or trees in general, (possibly about your own favourite) to be displayed on the Participatory Poetry Wall at Turnbull's Delicatessen during the BARK! Festival.

See www.barkfestival.co.uk for details.

Westminster Memorial Hospital

Shaftesbury School Pupils' Art Exhibition

All Year 7 students have been exploring Shaftesbury's trees through words and pictures in their English and art lessons. They have written poems and have combined these with images to create artworks that will be shown at the hospital.

Wednesday 15 April

Tim Laycock

A musical and magical celebration of trees and woods in folksong, traditional stories and dialect poetry of Wessex.

Folksinger, songwriter, actor and creator of The New Scorpion Band, Tim is a specialist in the songs, traditions and dialect of the West Country and the poetry and prose of **William Barnes** and **Thomas Hardy**.

7.30 Tickets £9.50, £7.50 SAC Members, U18s £4



Friday 17 April



Film: The Tree of the Wooden Clogs (12)

A film directed by Ermanno Olmi, 1978, with subtitles.

Described as 'a cinematic miracle' and winner of the Palme D'Or at Cannes in 1978, this film charts the story of the hard life of peasants amongst the beautiful landscapes of Lombardy at the turn of the 19th/20th centuries.

8.00 - 11.10

Tickets £5 SAC members £4

Saturday 18 April

A Saint's Rod at Stockwood and other tree Legends of the West

A talk by **Jeremy Harte**.

Jeremy is a researcher into the overlap between folklore and archaeology, with a particular interest in sacred space, tales of encounters with the supernatural, and the traditions of Dorset, where he grew up.

His books include 'Cuckoo Pounds and Singing Barrows', 'The Green Man' and 'Explore Fairy Traditions'.

7.30

Tickets £8.00, £6.00 SAC Members, U18s £4





Saturday 18 April – Sunday 19 April

Woodland, Wild life

and sustainable use of

Timber

Displays in **Shaftesbury Guild Hall** by groups including:

Cranborne Chase & West Wiltshire Downs AONB

Dorset AONB

Dorset Centre for Rural Skills

Dorset Coppice Group

Dorset Greenwood Tree Project

Dorset Wildlife Trust

Dorset Woodlink

North Dorset District Council

Shaftesbury Tree Group

Woodland Trust

10.00 - 4.00 Saturday, 11.00 - 3.00 Sunday



Sunday 19 April

Trees, Woods & the Green Man

An illustrated talk by **Sue Clifford**.

Sue is a director of **Common Ground**, the national arts and environment charity, now based in Shaftesbury.

She is also a founder member of the Shaftesbury Tree Group. Sue will give an illustrated talk that explores our natural and cultural relationship with trees and woods.

and

Ancient Trees of North Dorset

An illustrated talk by **Sean Cooch**.

Sean is a Land Management Conservation Advisor with Natural England in Dorset, specialising in habitat restoration and management, ancient trees and invertebrates.

7.30

Tickets £8, SAC Members £6, U18s £4



Wednesday 22 April

SAC Music and Drama presents:

The Forest is a Long Time Growing

An evening of readings poetry, prose and music inspired by trees and woods. Abbey Primary School choir sing **Tree Music**, songs written by Abbey Primary School pupils with composer **Karen Wimhurst**. Display of tree foliage arrangements by the **Shaftesbury Flower Arranging Group**.

7.30

Tickets £7, SAC Members £5, U18's £3.00.

Friday 24 April



Films: **Ivan's Childhood** (12) *and* **The Man Who Planted Trees** (NC)

'**Ivan's Childhood**' ('Ivanovo detstvo') was directed by **Andrei Tarkovsky** in 1962 and based on the novel by **Vladimir Bogomolov**. It explores a 12 year old's spying missions among the eerie forests behind enemy lines in WW2. Subtitles, 95 mins.

'**The Man Who Planted Trees**' ('L'Homme qui plantait des arbres') is a short animated film by **Frederick Back**, 1987, based on **Jean Giono's** famous book about one man's quest to reforest a denuded valley. 30mins.

8.00-10.15

Tickets £5, SAC Members £4.

Saturday 25 April

Beechcombings: The Narratives of Trees



A talk by **Richard Mabey**.

Richard is Britain's greatest living nature writer.

Author of *'Food for Free'*, *'Flora Britannica'* and *'Nature Cure'*, his latest book, *'Beechcombings: The Narratives of Trees'* elegantly challenges our perception of trees.

7.30 Tickets £12, £10 SAC Members, U18s £5

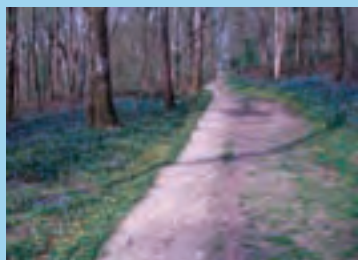
Huckleberry's Bookshop in Blandford Forum will be setting up a stall to sell *Beechcombings* and other books by **Richard Mabey** and other **BARK!** authors.

Richard will be available for book signings.



Sunday 26 April

Duncliffe Wood



A walk with with **Robin Walter**, Woodland Trust. See the bluebells and other wild flowers at their best.

11.00

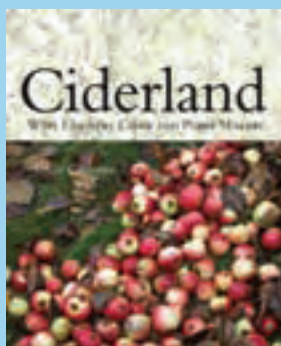
Meet at the entrance by the road from New Lane.

Grid ref: ST817223.

Free (donations to the Woodland Trust).

Wednesday 29 April

Ciderland



A talk by **James Crowden**.

James is an author and poet who lived in and worked near Shaftesbury as a shepherd and sheep shearer for many years.

James's latest book, 'Ciderland' charts the development of cider-making in the West Country and takes us around the beautiful and fragmented orchards. It includes conversations with and descriptions of over 120 cider and perry producers in the West Country. It also covers cider and health, folklore, superstitions and down to earth remedies, placing cider very firmly at the centre of West Country culture. Plus 10 minute film '**The Cider Drinkers**' and cider tastings with local cheeses from **Turnbull's Delicatessen** in the interval.

7.30

Tickets £8, £6 SAC Members, U18s £4

Acknowledgements

Many thanks to Blackmore, Cranborne Chase & West Wiltshire Downs AONB, Dorset AONB, North Dorset District Council and Shaftesbury Town Council for their financial support; Charlie Waite for his fundraising talk, and for donating his fees to the BARK! festival and Sue Clifford & Sean Cooch for doing likewise; Darren Giddings for designing this programme and Dave Martin for designing our website.

The BARK! Team: Eric Bailey, Sue Clifford, Tamara Essex, Barry Freeman, Angela King, Paul Schilling, Peter Ursem and others.

Paper comes from trees. **Blackmore Ltd**, based in Shaftesbury, is one of the country's leading environmental printers, rated in the top 1% of all UK print groups by Friends of the Earth. In 2007 they were voted the South West's Green Company of the Year and are holders of the prestigious ISO 14001 Environmental Standard Award.

Every aspect of their business has been examined to make it as environmentally benign as possible. They only use vegetable based inks, eco-friendly sealers and metallic inks, separate waste and recycle it wherever possible. They re-use ink cartridges, use energy efficient lighting, have introduced water-saving appliances and use an LPG van. Car sharing by employees is encouraged. A state of the art new press has enabled the company to save 50% on power and huge reductions on water use.

Blackmore give the following reasons for using recycled fibre:

1. **Lower resource use.** Paper manufacture is very resource-intensive. It simply makes no sense to use paper only once when it can so easily be re-used.
2. **Less landfill:** Recycling reduces the amount of waste paper going to landfill. As it biodegrades in landfill it produces methane, which is 23 times more powerful than CO2.
3. **100% recycled paper** causes no harm to forests. According to Friends of the Earth, one tonne of recycled paper saves approximately six mature trees and 3.3 cubic yards of rapidly diminishing landfill space.

Blackmore Ltd, Longmead, Shaftesbury, Dorset SP7 8PX. (01747 853034).

www.blackmore.co.uk

Printed by Blackmore on Cyclus Offset 100% recycled paper.



BARK!

Arts Festival Shaftesbury

13-25 April 2009

Trees & woods of Shaftesbury & environs

We are fortunate to be in walking and cycling distance of some beautiful woods – at West Knoyle, Fifehead Magdalen, Kingsettle, Semley and Duncliffe (all Woodland Trust); Garston Wood north of Sixpenny Handley (RSPB reserve), Oyster's Coppice near Semley (Wiltshire Wildlife Trust), Piddles Wood near Broad Oak (Dorset Wildlife Trust), Stourhead (National Trust), a growing number of Community Orchards, and privately owned woods at Wincombe Park, Ashmore, Cranborne Chase and elsewhere crossed by rights of way. We must not take these places for granted. Almost half of all woods in the UK over 400 years old have been lost in the past 80 years (Woodland Trust) and more than 600 ancient woods are now threatened by new roads and development.

As well as enjoying the woodlands around us we must look after our own inheritance of trees and plant for future generations. Shaftesbury has some magnificent ash, beech, field maple, holly, lime, oak, sycamore, Scots pines and churchyard yews. But we often lack the foresight to plant trees of stature in our towns and open spaces – trees to provide habitats, shade and beauty, to lock up carbon, enhance local distinctiveness and make places.

Please support the voluntary groups that are taking stalls in the Guild Hall over the weekend of 18-19 April as well as the organisations that take responsibility for looking after woodlands for nature and our enjoyment. Our survival depends on trees. www.barkfestival.co.uk



Shaftesbury Tree Group was established in 2002. We help to safeguard our significant trees and make suggestions for future planting. Join us and come to our monthly meetings.

Email - shaftesburytreegroup@hotmail.co.uk



Shaftesbury Arts Centre will take the lead in seeking to optimise opportunities for the community of Shaftesbury and the surrounding area to experience and take part in a high standard of the widest range of creative arts. Email - contact@shaftesburyartscentre.org.uk

www.shaftesburyartscentre.org.uk